



The InveStore Appliance – Secure, Turn-key Performance Archiving

Ease of Use – Manage Highly Regulated Data

For many organizations, configuring several different components to create a single complete archiving solution can be frustrating, time consuming and difficult. More important, increasing data volumes and a growing list of corporate and regulatory requirements are causing organizations to re-think their plans for long-term data archiving. If you're not, you may be exposing yourself to significant and unnecessary risks.

The consequences of failing to recover data and documents completely and quickly - especially in light of electronic discovery requirements - can have significant financial implications.

The InveStore Appliance is a combined hardware and software plug and play solution that eases the management of highly regulated data and is ideal for both structured and unstructured data from all types of applications.



Open and Scalable

The Appliance is a powerful Intel based server platform preloaded with Pegasus' InveStore v5 Archive Management Software. It is network ready and available in scalable capacities to meet small to medium to enterprise environment storage needs. It utilizes industry standard hardware and fast power efficient SATA-drives for active archive and system functions. In addition to serving as an archive storage management server, it can also be shared as an application server in small organizations, further controlling system deployment expenses. It is available in cost effective configurations to meet different on- and off-line critical information storage and high speed access requirements.

The Appliance is configured and ready for the attachment of a wide range of removable WORM media drives and libraries that provide back-end storage of critical data. The appliance uses

protected RAID 6 disks for fast access and removable WORM media for compliance, disaster recovery and long term archive of all data – the safety net. Drives and libraries configured with Blu-ray, DVD, UDO and other removable WORM media types are compatible with the Appliance.

Lower Cost of Ownership

The combination of efficient hard disk for immediate access and performance, and removable archive media for long-term data protection significantly reduces the total cost of ownership. Hard disk provides "active archive" access and removable media is utilized for long-term data that must be stored but does not need to be active all the time, unnecessarily occupying more space and consuming more energy. When data stored near- or off-line on removable media must be recovered, it is returned to the active archive transparently to the user. In addition, by utilizing hard disk for active and removable media for non-active information, support and maintenance on those individual tiers of storage is reduced significantly.

Environmental Sustainability

We must significantly reduce power consumption and cooling requirements



Environmentally Responsible Archive Solution

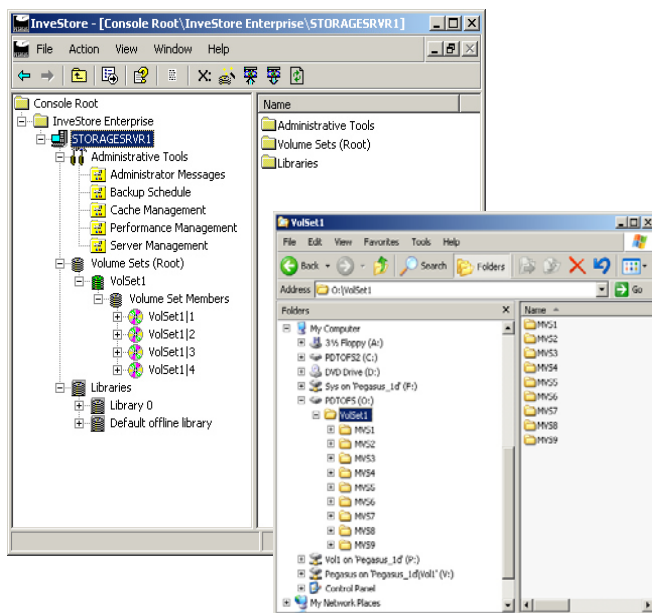
The InveStore Appliance utilizes the latest in energy efficiency technologies. For secure long-term storage, removable media requires little or no power and cooling for data stored safely off-line. For the active archive the Appliance utilizes energy conserving SATA hard drives. These drives have been engineered for energy-conscious customers. They blend system performance, ensured reliability and energy conservation. The manufacturer has reduced power consumption by up to 40 percent compared to other competitive drives. The drives we use yield average power savings of 4-5 watts. This power savings equates to reducing CO² emission by up to 13.8 kilograms per drive per year - the equivalent of taking a car off the road for 3 days each year*. By using environmentally-conscious drives in our Appliance, you can minimize the carbon footprint and save real money on electricity.



Appliance Specifications

System Interface

Pegasus' InveStore v5 software is embedded on the Appliance. InveStore v5 is a powerful Windows based software package that manages structured archive data being generated by an application, including document management, imaging or database management. It can also manage and migrate unstructured data from various locations on the network to archive. InveStore plugs and plays with many applications through a common file system interface. The system is also transparent to Windows and it can be utilized as a secure file destination for backup utilities or drag and drop operations under Explorer.



The Appliance appears to any server or workstation on the network as a single mapable storage location. Applications or end users can transfer data to and from the archive volume as if it were local storage. There are no proprietary interfaces or complicated management screens. Administrators can use standard security settings to control access to the archived data volume.

Flexible configurations meet different requirements

Appliance configurations can scale based on the size of an organization, capacity requirements and the need for secure removable WORM libraries.

InveStore Appliance	Disk and Removable Capacity
WINAP500-1	500GB Raid 6 hard disk Standalone WORM Drive
WINAP500-25	500GB Raid 6 hard disk 1.5TB Archive Library Support
WINAP500-52	500GB Raid 6 hard disk 3TB Archive Library Support
WINAP500-80	500GB Raid 6 hard disk 4.8TB Archive Library Support
WINAP1500-150	1.5TB Raid 6 hard disk 9TB Archive Library Support
WINAP1500-200	1.5TB Raid 6 hard disk 12TB Archive Library Support
WINAP1500-250	1.5TB Raid 6 hard disk 15TB Archive Library Support
WINAP2500-400	2.5TB Raid 6 hard disk 24TB Archive Library Support
WINAP3500-550	3.5TB Raid 6 hard disk 33TB Archive Library Support
WINAP4500-650	4.5TB Raid 6 hard disk 39TB Archive Library Support

The Appliance configurations include:

- Intel XEON E5420 2.5G 80W CPU
- 4 GB RAM
- ATI Graphics Controller
- Intel Gigabit LAN Controller
- Microsoft Windows Server
- 2.5 Inch 10K RPM hard disks
- RAID Card and SCSI Adapters
- Blu-Ray WORM / RW drive
- 19" Rack mountable server case

For Appliance configuration and pricing information, please contact Pegasus at sales@pegasus-afs.com

*Assumes that a car produces 1.60 CO² pounds per Kwatt/hours/year. Calculation of automobile emissions depends on the car's g/km emission levels and km/year of driving.