



*Backup Solutions*  
with Computer Associates BrightStor

This document describes how to configure Computer Associates BrightStor with Pegasus InveStore to manage archive media storage devices.

**Pegasus Disk Technologies**  
**2333 San Ramon Valley Road**  
**San Ramon, California 94583**  
**Phone (925) 314-1800**  
**Fax (925) 314-1801**  
**[www.pegasus-ofs.com](http://www.pegasus-ofs.com)**

## Table of Contents

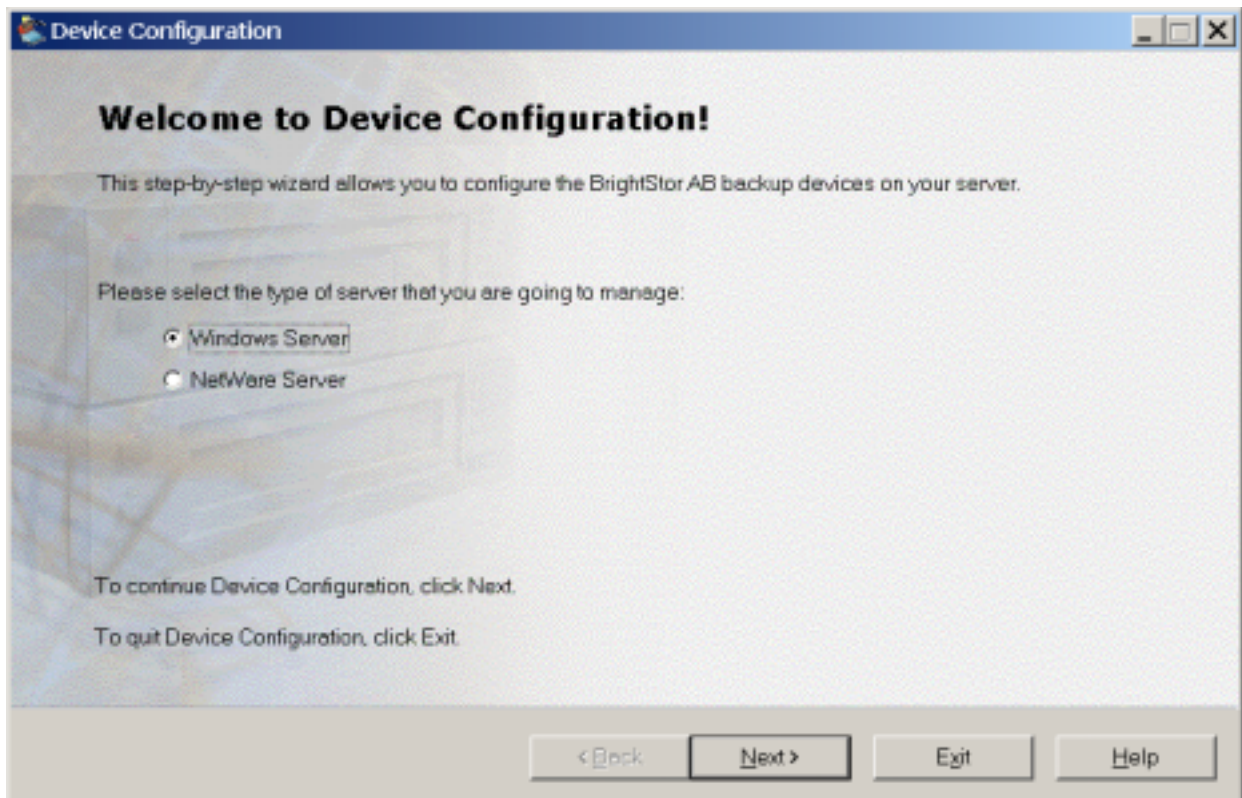
Configuring Computer Associates BrightStor for use with InveStore .....	2
Device Configuration.....	2
Configuring a Backup Job with Computer Associates BrightStor and Pegasus InveStore .....	9
Running the Backup Wizard.....	9

## Configuring Computer Associates BrightStor for use with InveStore

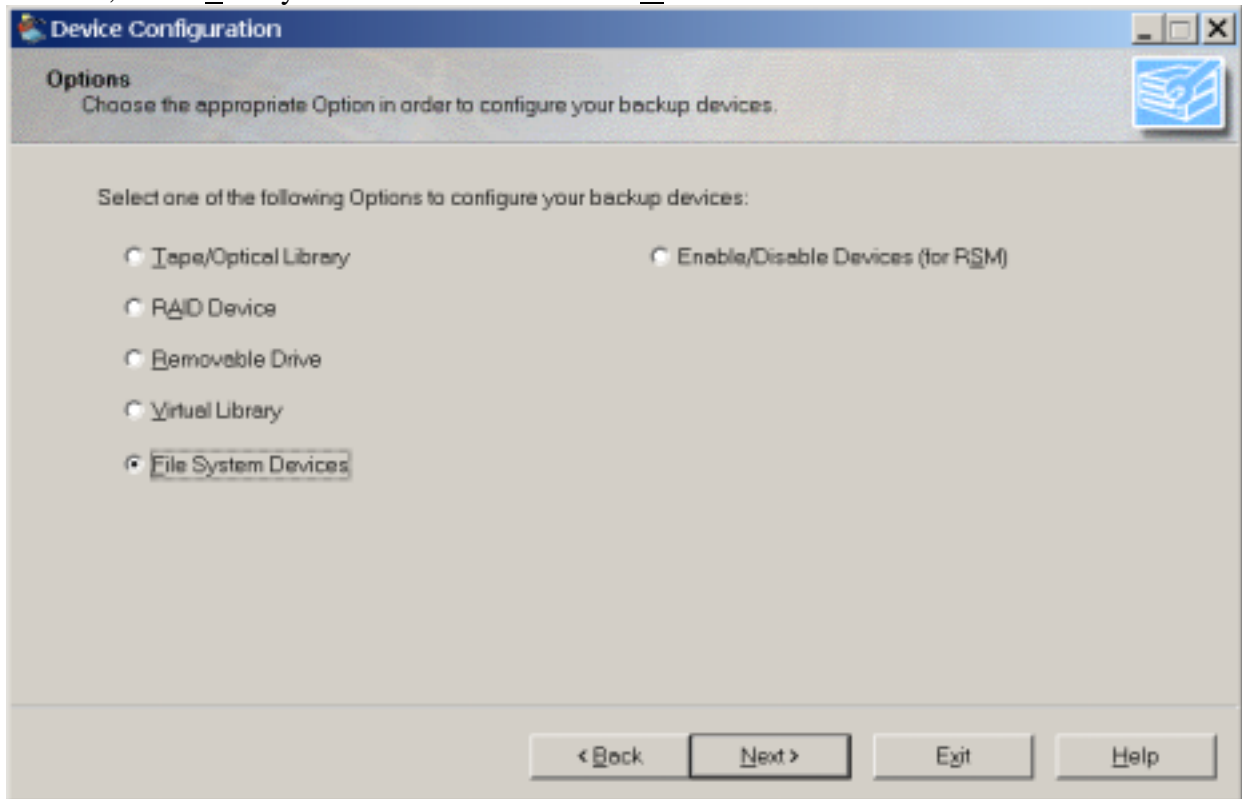
### *Device Configuration*

Once you have installed BrightStor, the process for configuring it for use with InveStore is quick and easy. Simply follow this procedure:

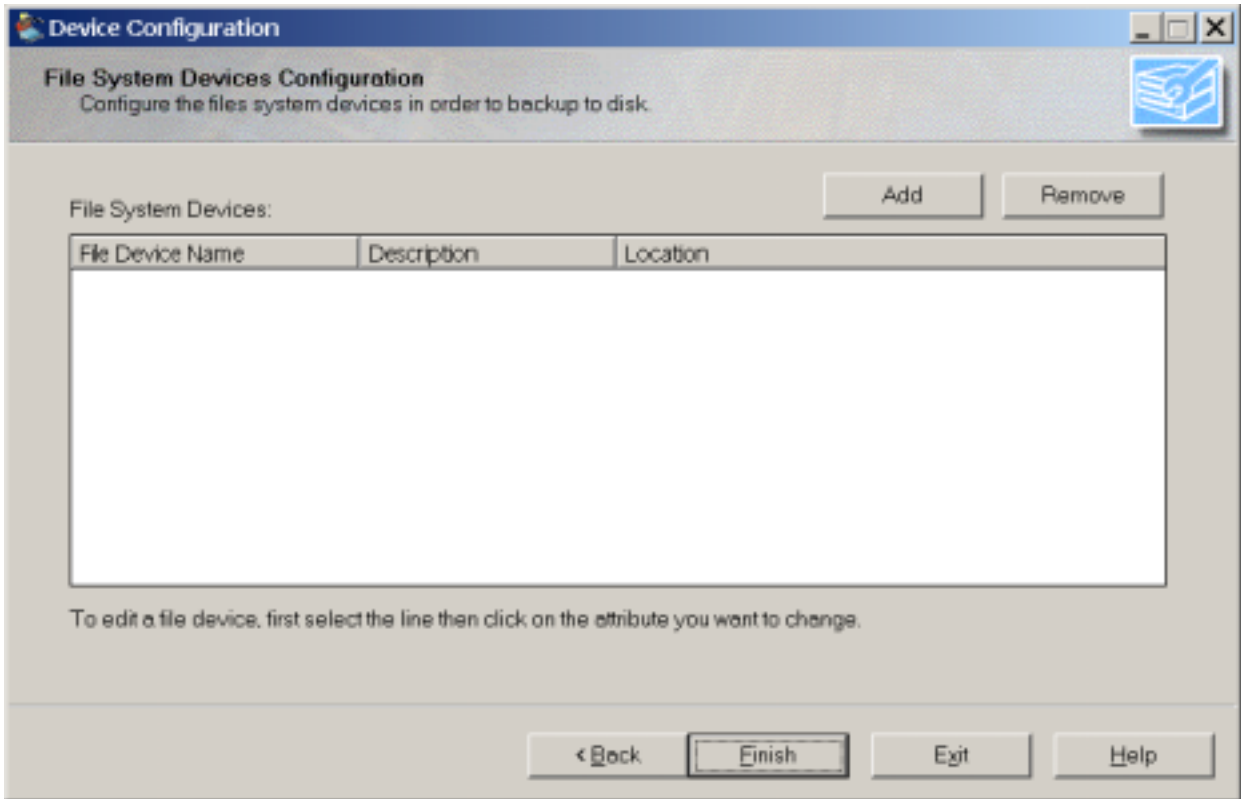
1. Open the BrightStor Device Configuration option from the Windows START - Programs – Computer Associates – BrightStor – Arcserve Backup – Device Configuration icon. The screen below will appear. Select “Windows Server and click on Next>



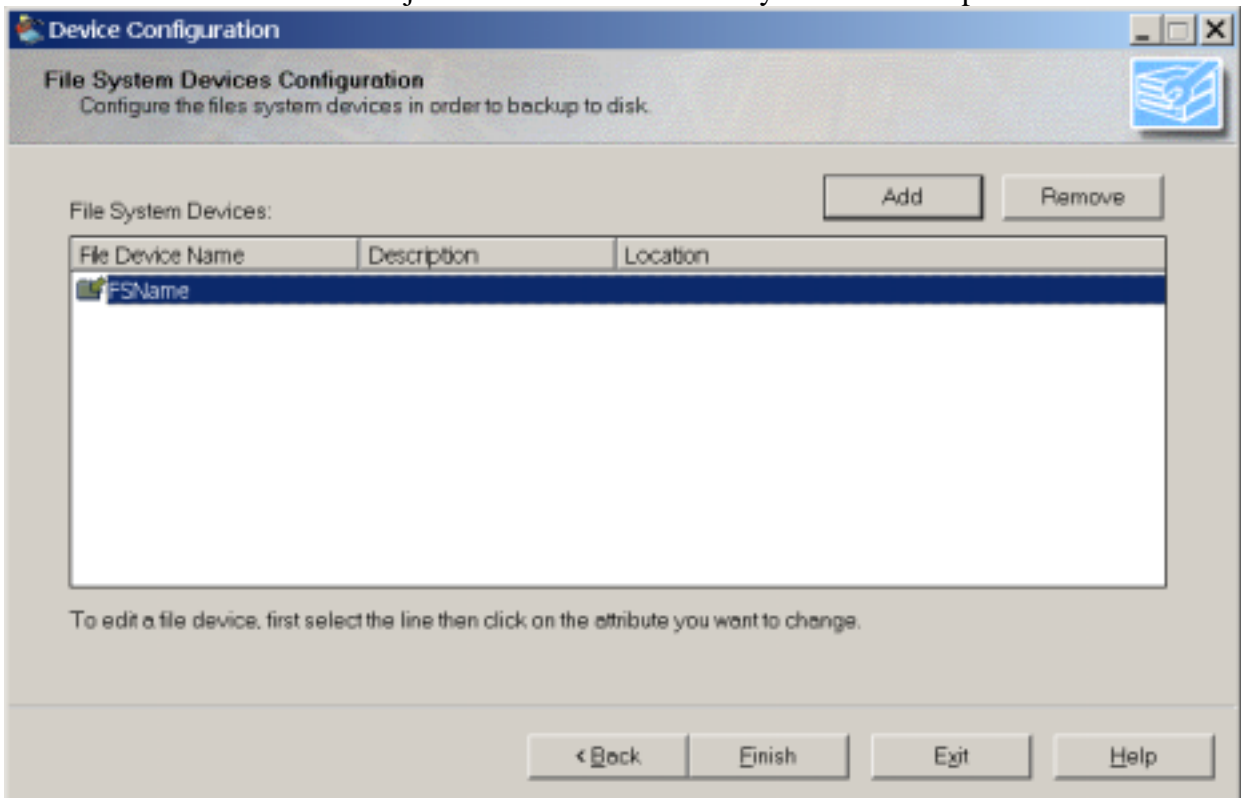
2. Next, select File System Devices and click on Next>



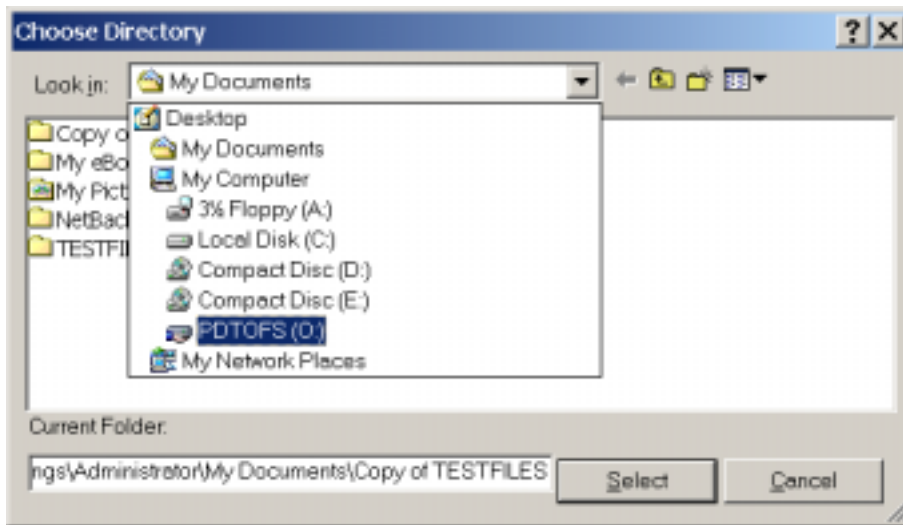
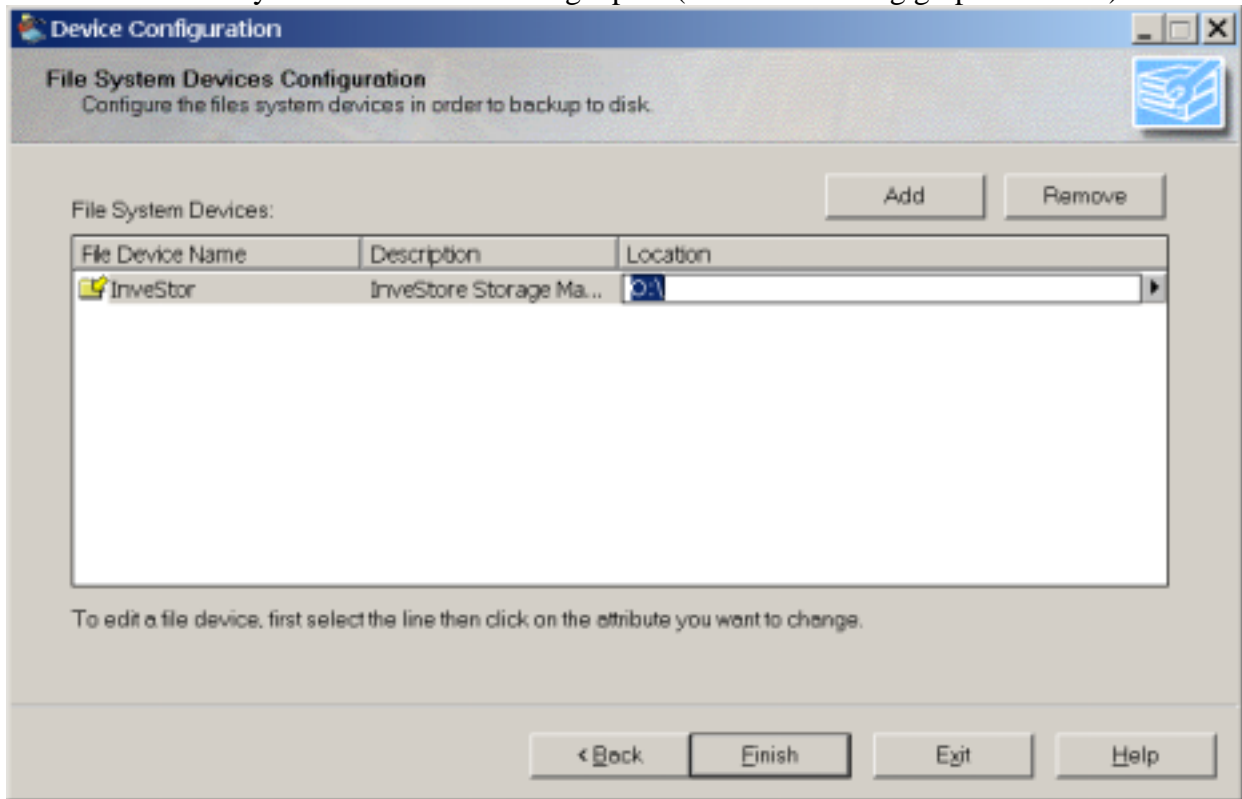
3. The File System Devices Configuration screen appears, Click on Add to add a path to an InveStore volume set

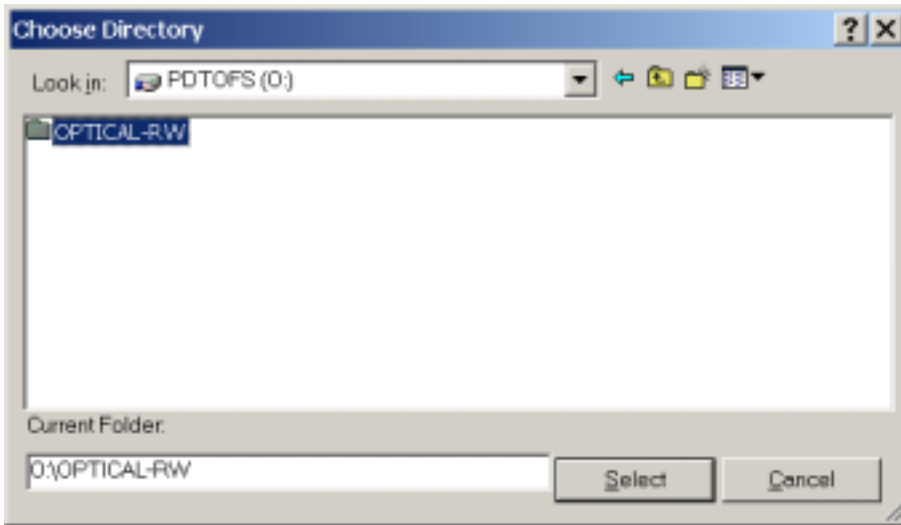


4. After selecting Add, the File System Devices Configuration screen will add a device named FSName. Select this object and click on it to modify the name and path.

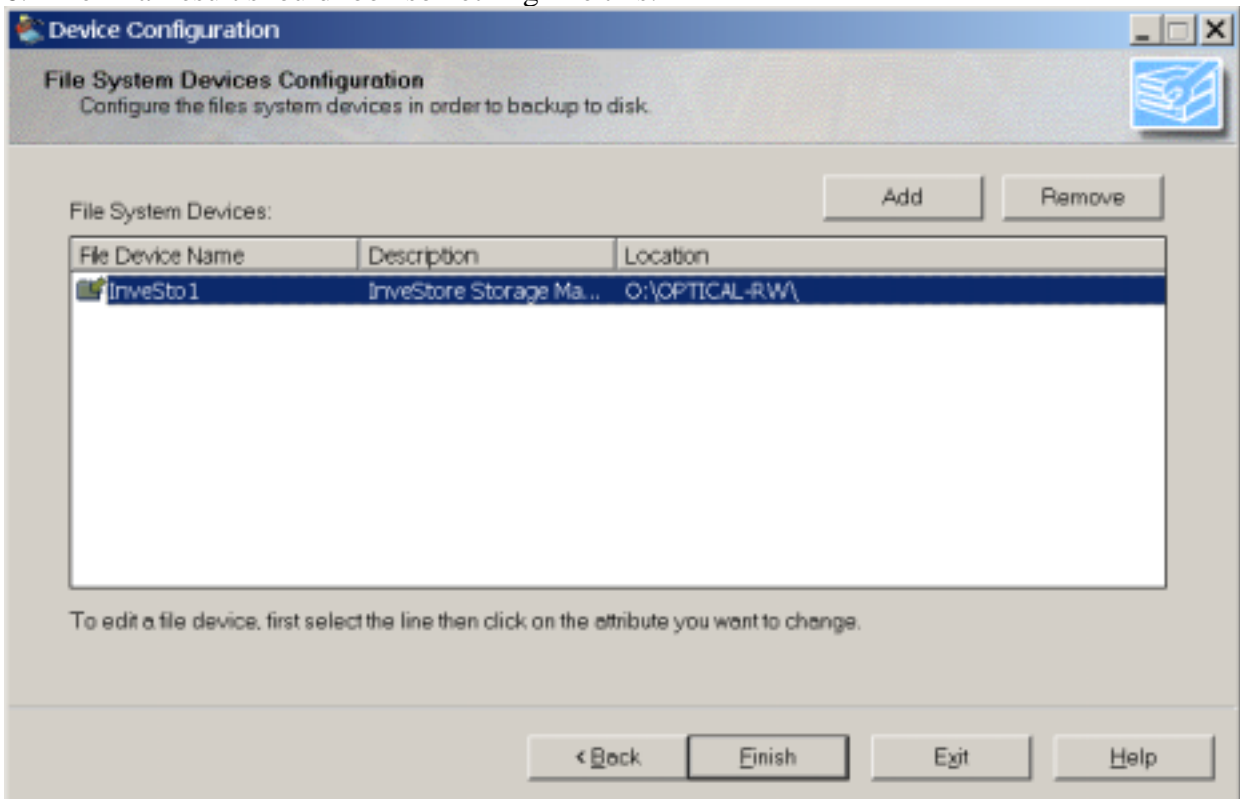


5. Supply a meaningful name, such as the volume set target name or another meaningful description. Add a description and the full device location. You may use the right arrow to browse the directory tree and choose the target path (see the following graphics below).

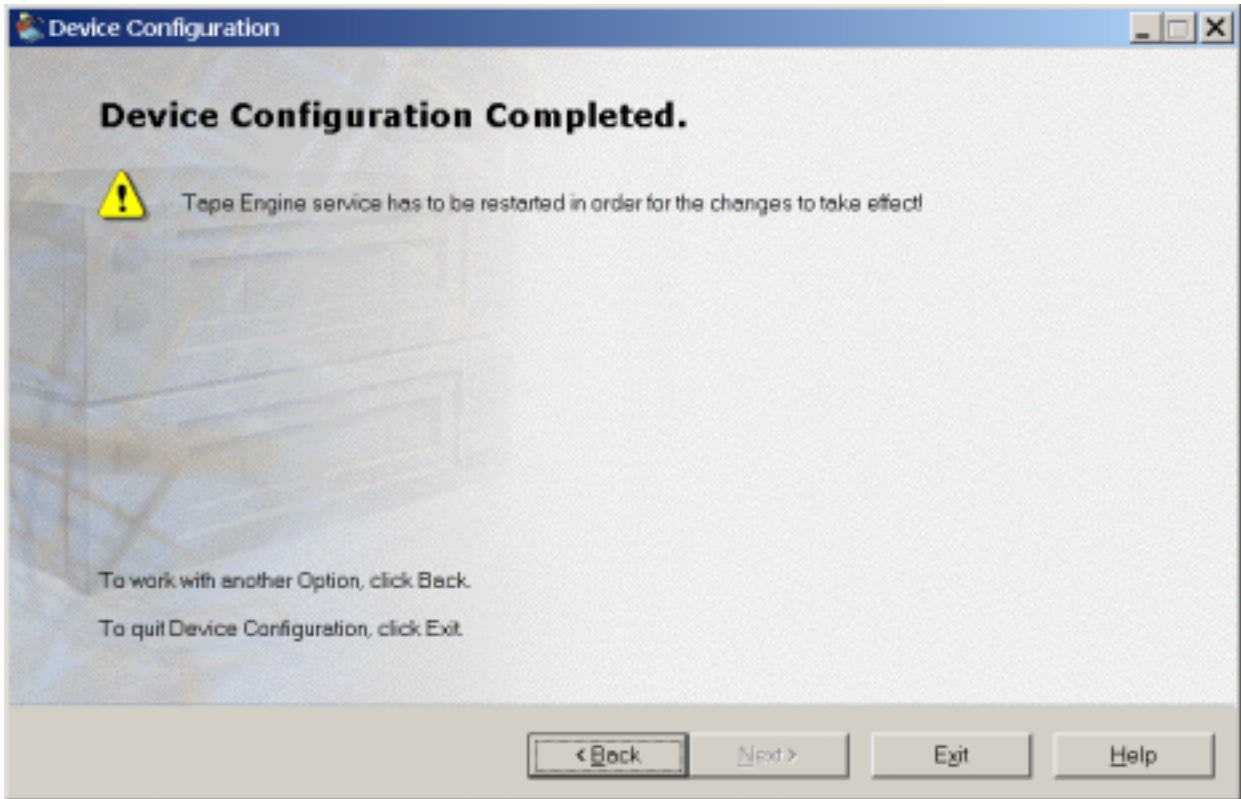




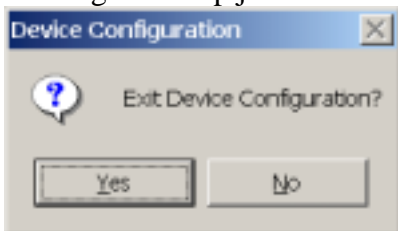
6. The final result should look something like this:



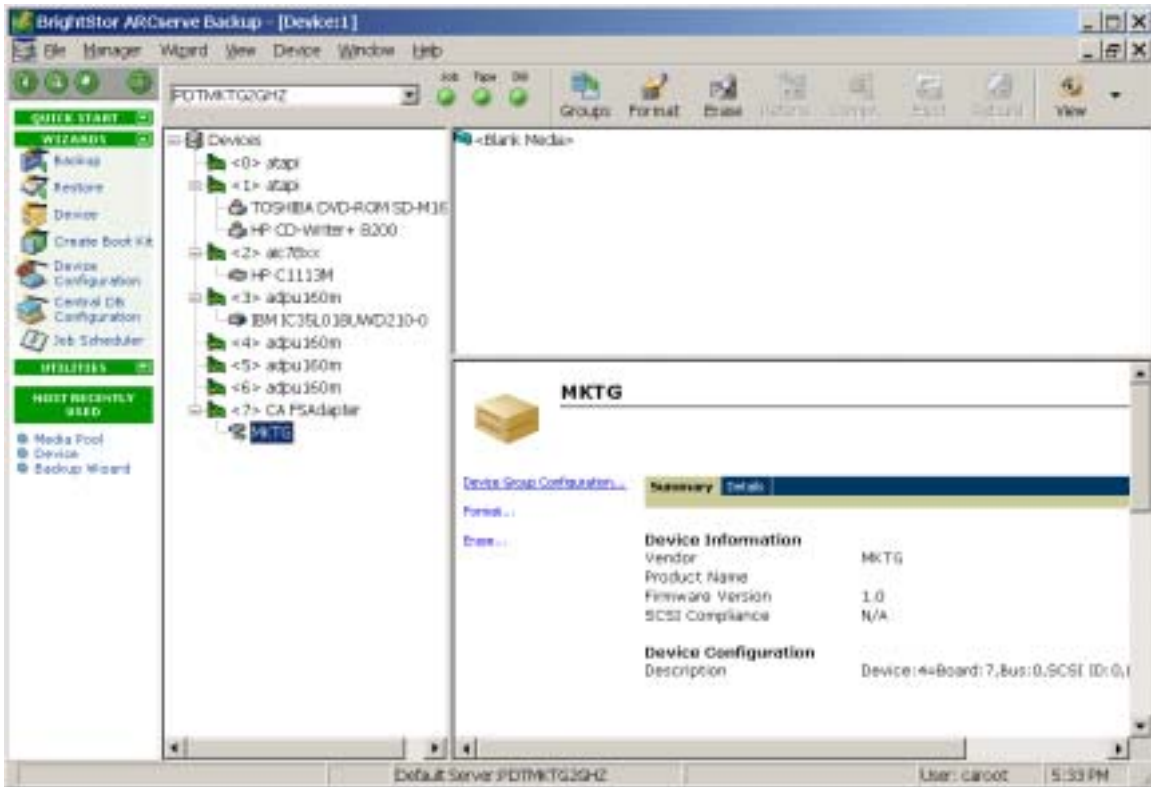
7. Click on Finish to complete the configuration, Add to configure additional InveStore volume set targets, or Back to modify the latest entry.



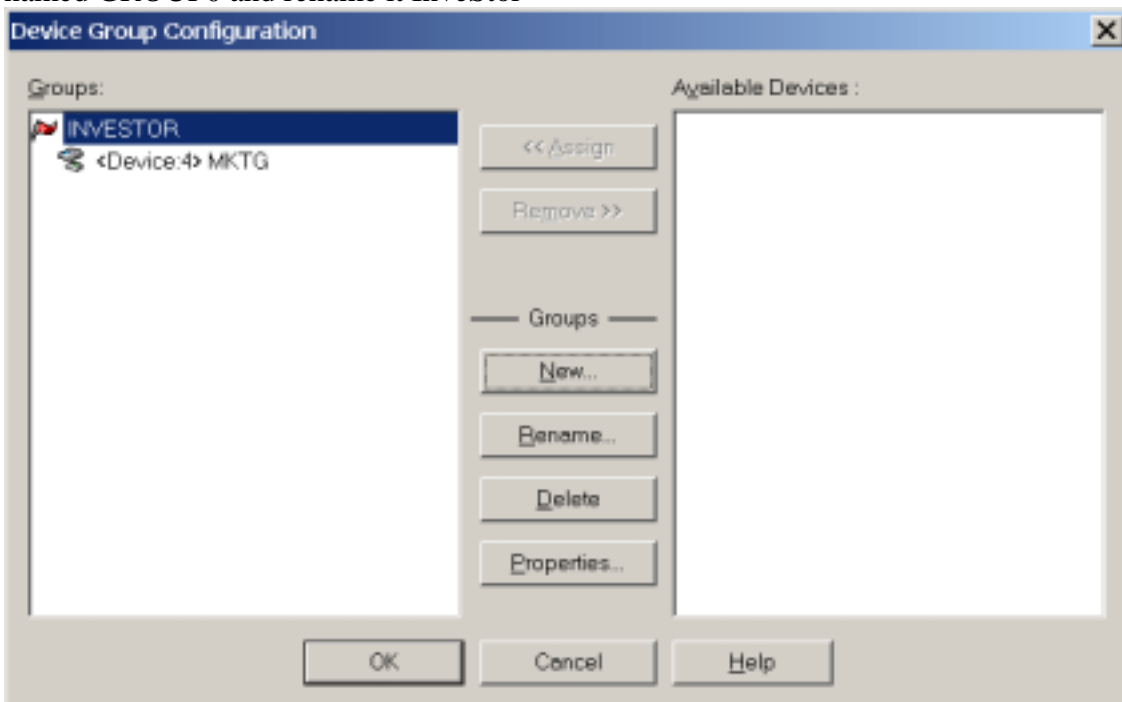
8. If you are finished, click Yes to exit the Device Configuration process and move on to creating a backup job.



As a final step to simplify Backup Job definition, you may wish to rename the Device Group name from GROUP0 to InveStore or another meaningful name. Do this by opening the BrightStor “Manager.”



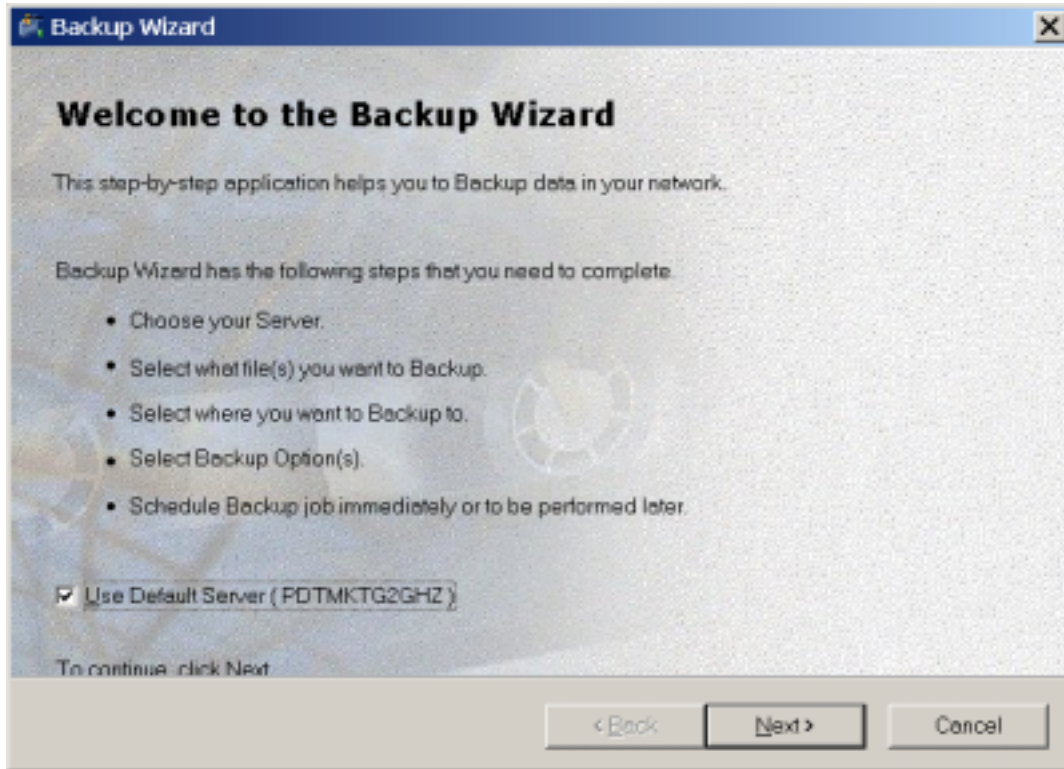
Click on the CA FSAdapter sub option MKTG (in this example) and then Select the Group named GROUP0 and rename it InveStor



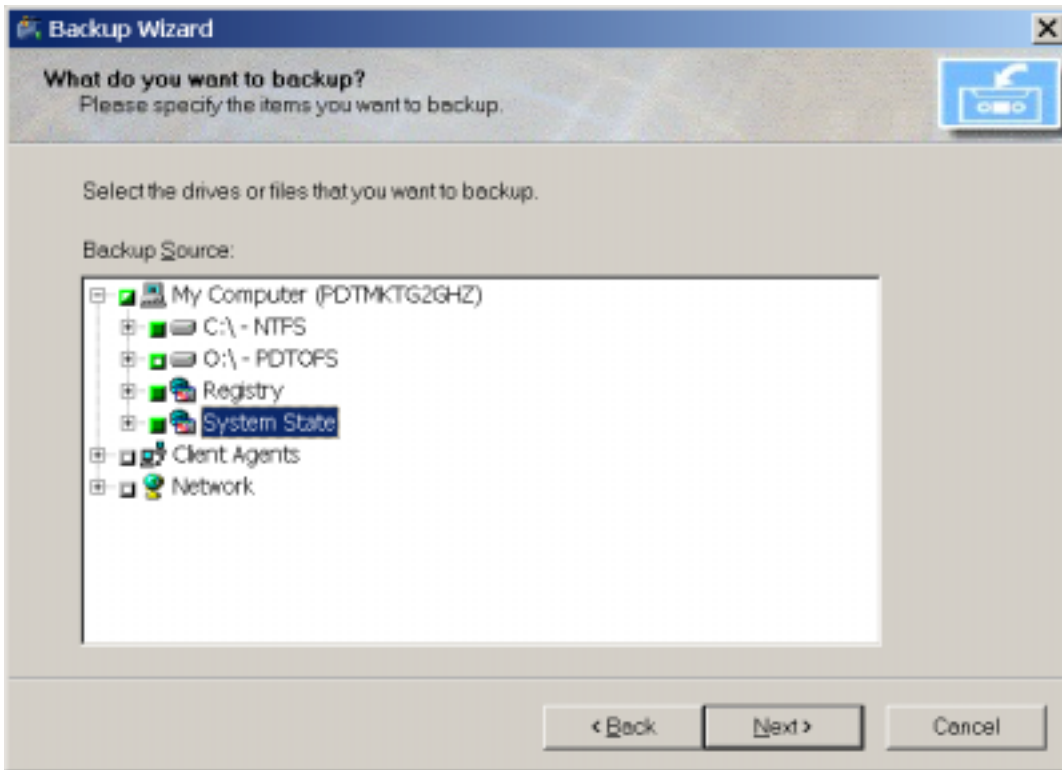
Finally, click on the Backup Wizard and follow the screens (example below).

# Configuring a Backup Job with Computer Associates BrightStor and Pegasus InveStore

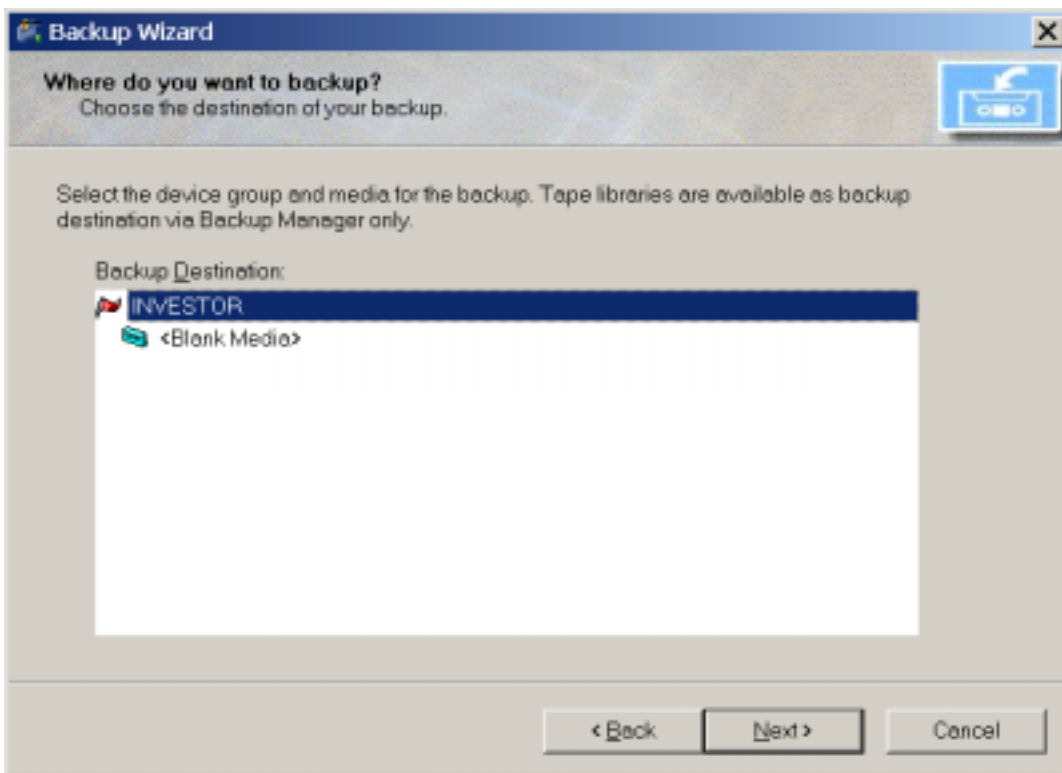
## *Running the Backup Wizard*



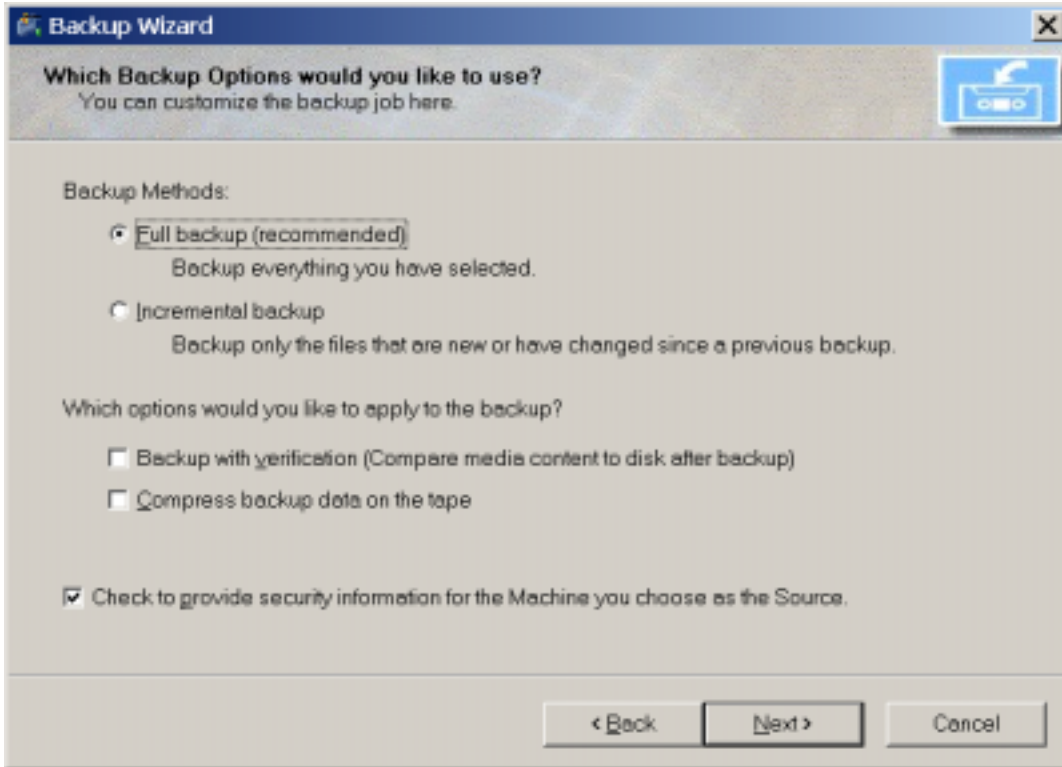
Click Next> to continue



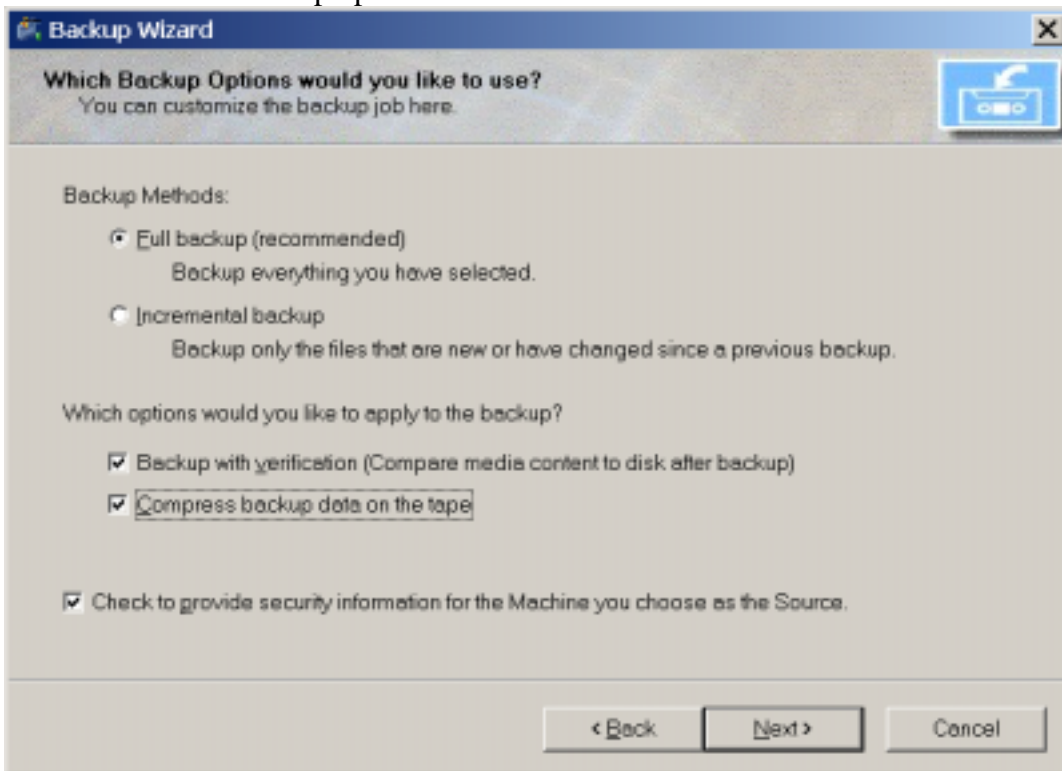
Select the source data and then click Next>

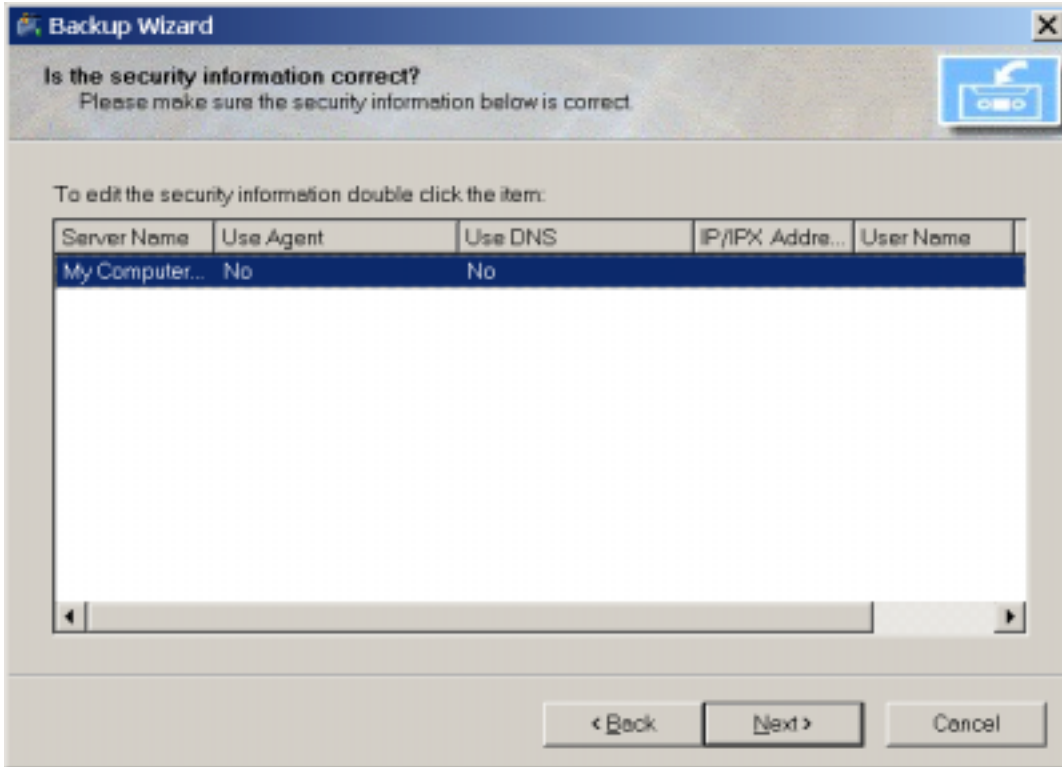


Select the InveStore backup target.

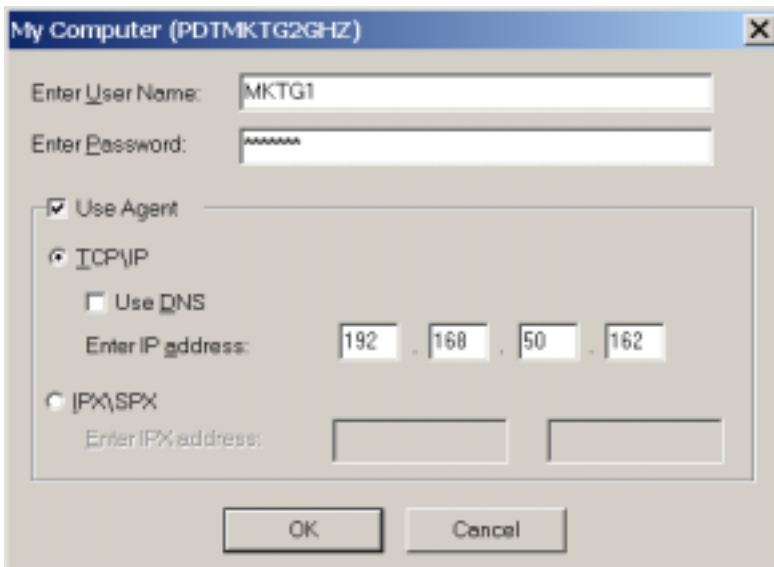


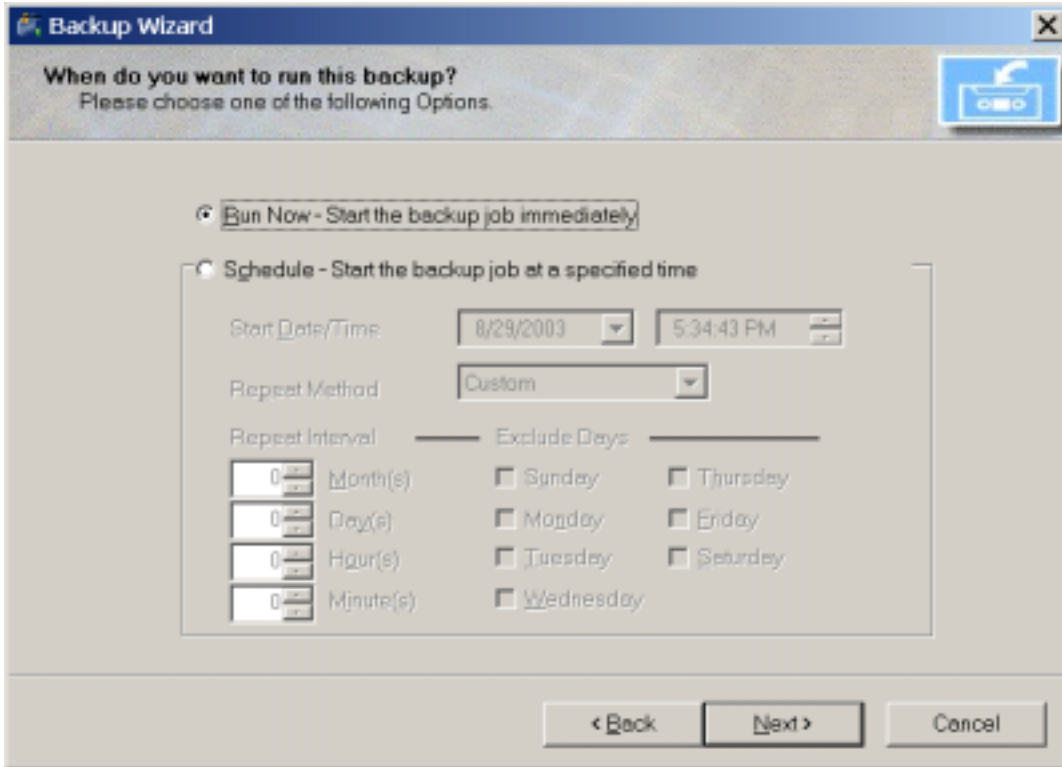
Select the desired backup options.



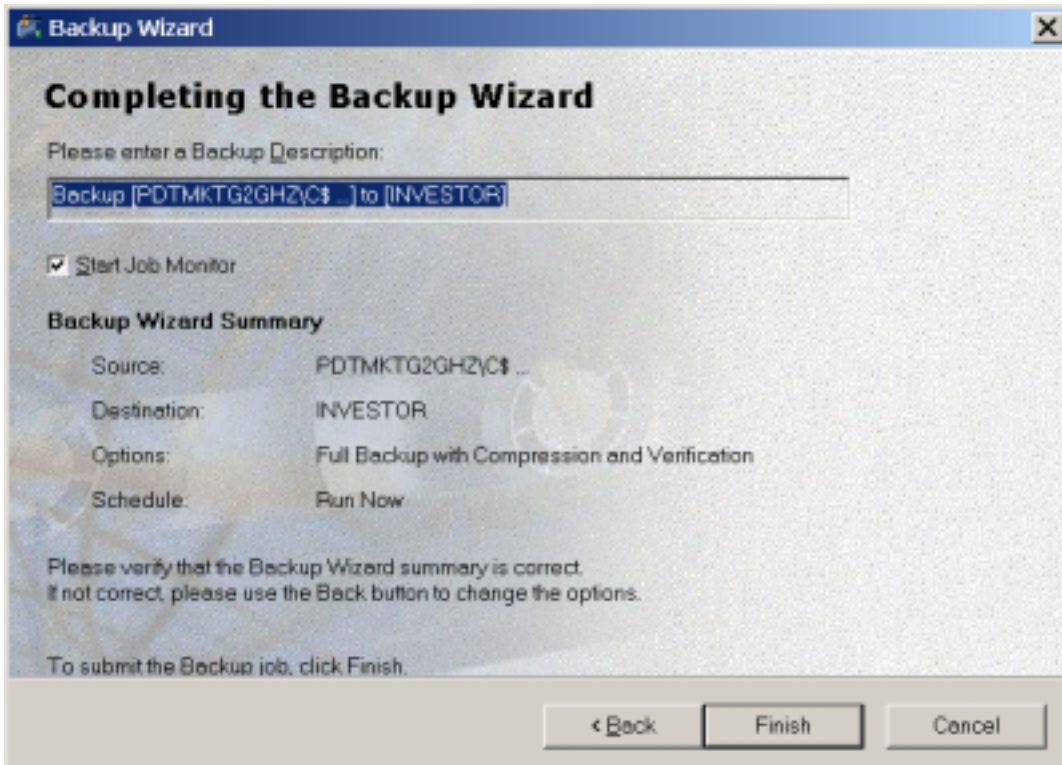


Select agent options as needed.



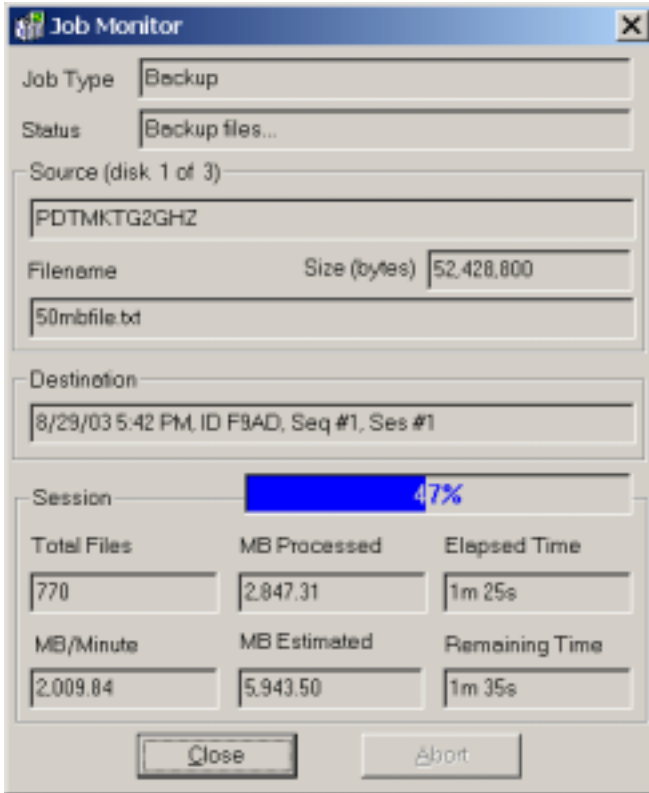


Choose run now or schedule as needed.



The backup job creation process is now complete click Finish

*Configuring Computer Associates BrightStor for use with InveStore*



If you selected “run now option,” the Job Monitor will appear.